

Mitchell Industrial Park

Property Report (Mitchell Industrial Park)



Property Details

Site/Building Name	Mitchell Industrial Park
Street Address	Hamilton Blvd.
City	Mitchell
County	Lawrence County
Zip Code	47446
Type of space	R&D, Warehouse/Distribution, Heavy Mfg, Industrial, Business Park, Light Mfg, Whse/Dist
Min Size	1 acres
Max Size	98 acres
Last Updated	9/21/2017

Contact Information

Company	Lawrence County Economic Growth Council
Contact Name	Shance Sizemore
Address	1116 16th Street
City	Bedford
State	Indiana
Phone	812-275-4493
Email	shance@lawrencecountygrowth.com
Website	http://www.lawrencecountygrowth.com/?lawrence-county-economic-growth



Availability

Lease Type	private
For Sale	Yes
Sale Terms	Price Negotiable Per Acre
Sale Price	\$ 35,000.00

Building Details

Building Environment	Downtown - Commercial
Building Type	Distribution

Site Details

Shovel Ready	Yes
Featured Site Description	Shovel Ready
Industrial Park Name	Mitchell Industrial Park
Phase 1	Yes
Contiguous Acres Available for Development	37.1
Total Acres	98 acres
Zoning	(Industrial usage)
Zoning Authority	City of Mitchell

Transportation

Interstate Name	I69
Distance to Interstate	26.5 miles
Highway Description	4 Lane Highway that merges with the new Interstate 69 development
Nearby Highway	Highway 37
Distance to Nearest Highway	1.5 miles
Nearest International Airport	Louisville International Airport
Distance to Nearest Airport	69 miles
Regional Airport Name	Clark Regional Airport
Distance to Regional Airport	47 miles
Regional Airport Runway Length	5498.688 ft

Utilities

Electric	Yes
Distance to Electric	On site
Electric Provider	Duke Energy
Natural Gas	Yes
Distance to Natural Gas	On Site
Sewer	Yes
Distance to Sewer	On Site
Sewer Provider	Municipal
Water	Yes
Distance to Water	On Site
Water Provider	City of Mitchell
Internet Connection	Yes
Distance to Internet	On Site

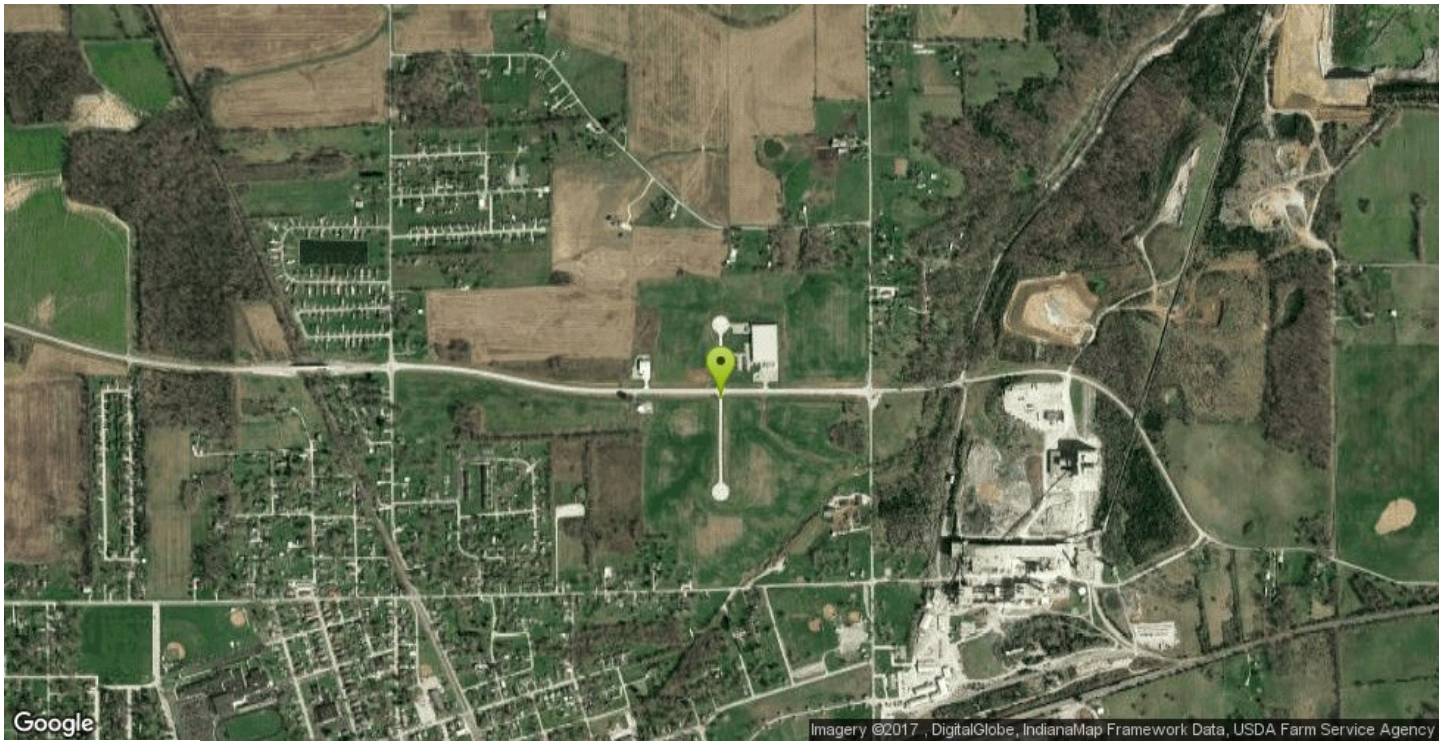
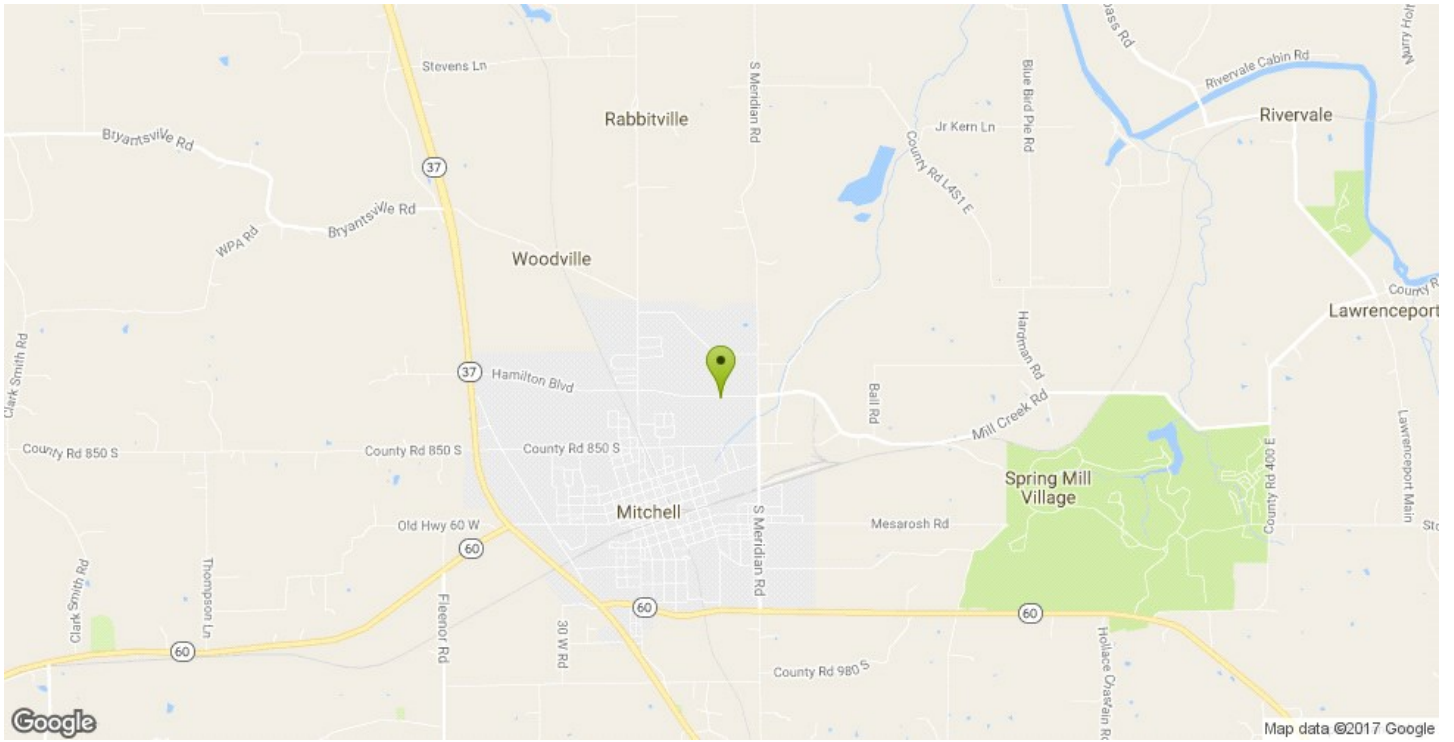
Other	
Ownership	City of Mitchell
Amenities	There is a new fire station in the Park and the upgraded Mitchell Sewer Treatment Plant abuts the Park. The site is 98 acres and is owned by the City of Mitchell, and is fully served with infrastructure including electric, gas, water, sewer and street access. The site can be subdivided.

Incentives	
Economic Revitalization Area	Yes
Tax Increment Financing Area (TIF)	Yes

Contacts	
Alternate Contact Name	JD England
Alternate Contact Company	City of Mitchell

Attachments	
Wetland Discussion.pdf Strand Associates report-out.pdf Maps.pdf Karst Report.pdf Flood Plain.pdf INDOT report.pdf	

Hamilton Blvd.



Hamilton Blvd.





